

State and County Requirements

No Trash in Waterways by 2025

The San Francisco Bay Regional Water Quality Control Board has required Contra Costa County and all of the cities and towns within the County to prevent trash from entering the creeks by June 30, 2025.

This means that all property owners within the County will be required to prevent trash from entering the creek or stormdrain system from their property.

Only Rain Down the Drain

The release of anything but uncontaminated rainwater to the County stormwater system is prohibited. [Contra Costa County Stormwater Ordinance 1014-4.006(a)]

Please see the back page for helpful resources to keep our waterways clean.



Helpful Resources



Visit cccrecycle.org for local information on:

- Waste Disposal
- Recycling
- Hazardous Materials Disposal
- Waste Hauler Curbside Services/ Bulky Pick-up



Report Illegal Dumping or Spills in Contra Costa County:

Call 1-800-No-Dumping



Report Dumping on Private Property:

Call Contra Costa County Conservation and Development Code Enforcement at 925-655-2710



Report Illegal Dumping or Other Complaints in Unincorporated Contra Costa County:

Mobile Citizen App:
contracosta.ca.gov/7875/Mobile-Citizen

Scan for
iOS App



Scan for
Android App



CONTRA COSTA
CLEAN WATER
PROGRAM

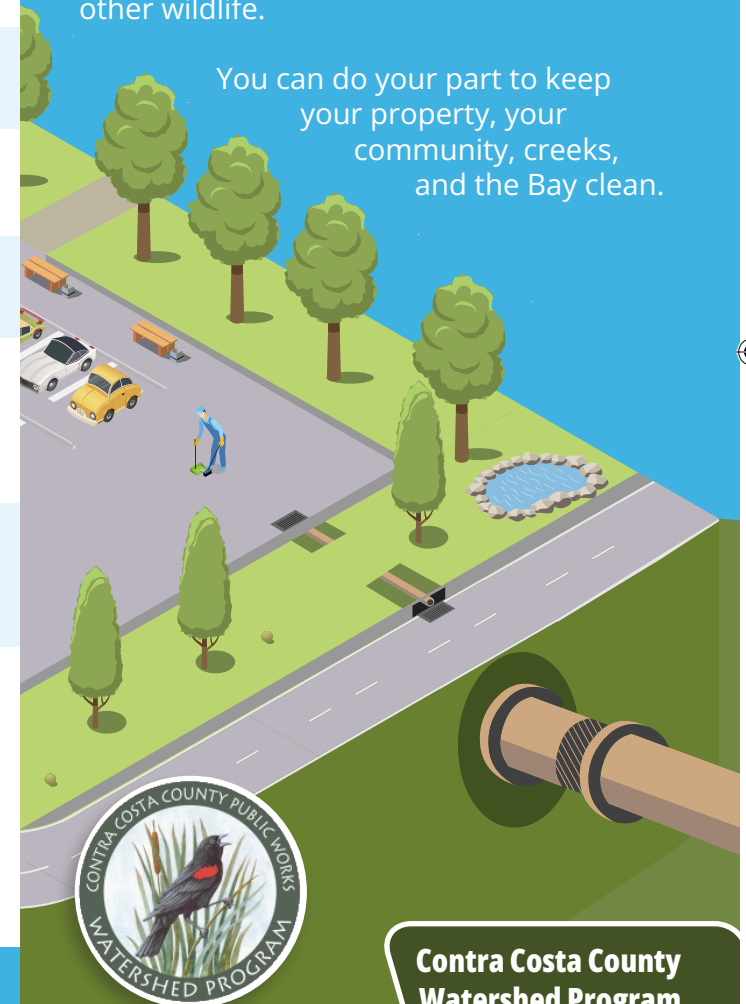
cccleanwater.org

Keep Your Property TRASH FREE

Trash and pollutants travel from our streets and properties to creeks, San Francisco Bay, and the Delta.

Trash and pollutants are dangerous to water quality and can harm birds, fish, and other wildlife.

You can do your part to keep your property, your community, creeks, and the Bay clean.



**Contra Costa County
Watershed Program**

255 Glacier Drive
Martinez, CA 94553
(925) 313-2000



[contracosta.ca.gov/
WatershedProgram](http://contracosta.ca.gov/WatershedProgram)

How You Can Help

..... Keep Litter Contained Pick It Up Protect Storm Drains

- ☐ 1. Choose the right size and pick-up service
- ☐ 2. Keep lids on trash bins
- ☐ 3. Keep trash in trash bins
- ☐ 4. Consider locking trash bins
- ☐ 5. Consider adding cigarette butt receptacles, if appropriate

- ☐ 6. Train staff to regularly inspect property for trash, pick it up, and empty receptacles
- ☐ 7. Pick up trash in vegetation and landscaped areas
- ☐ 8. Sweep up and dispose of cigarette butts
- ☐ 9. Install educational signage

- ☐ 10. Keep trash and pollutants out of the storm drain
- ☐ 11. Use dry cleanup methods; If using wash water, direct it to vegetation or collect it and direct it to a sanitary sewer
- ☐ 12. Consider installing and maintaining a full trash capture device

