

Site 38 – Marsh Creek

Site Coordinates **609263, 4192377** Site Datum: **UTM WGS 1984**

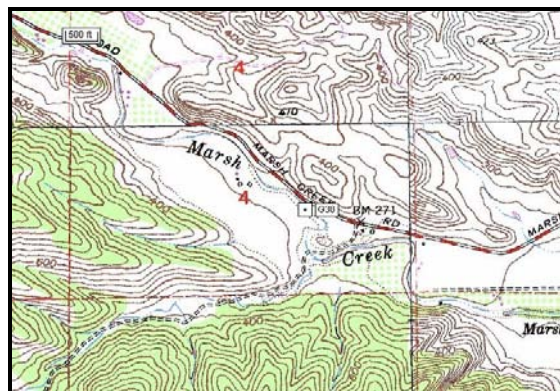
Primary Attributes		Confinement Class	MC (h)
Entrenchment Ratio	1.9 (M)	Active bank erosion	Low (m)
Entrainment Ratio	0.00041 (M)	Active sediment supply	Mod (m)
Secondary Attributes		Bed Materials	Cobble
Bankfull Width (ft)	22.5	Bank Materials	Silt
Bankfull Depth (ft)	1	Average Gradient	0.62%
Width/Depth Ratio	22.5 (m)	CLASSIFICATION	MEDIUM

(m) = Medium Criterion; (h) = High Criterion

RISK JUSTIFICATION: Primary attributes both support ‘medium’ classification. Coarse substrate combined with limited evidence of erosion under existing conditions (a notable exception occurring at an upstream paved ford); moderate supply of sediment that will help maintain an alluvial mantle and prevent incision; high width/depth ratio, indicating the ability to distribute shear stress during large flows; large roughness elements that will retard stream power.



SITE NOTES: Locally steep eroded bluffs providing a moderate amount of sediment supply. Banks mostly stable and well vegetated. Occasional boulders and bedrock blocks in channel. Channel incised about 9 feet into valley floor.



Attachment 4, Appendix B

